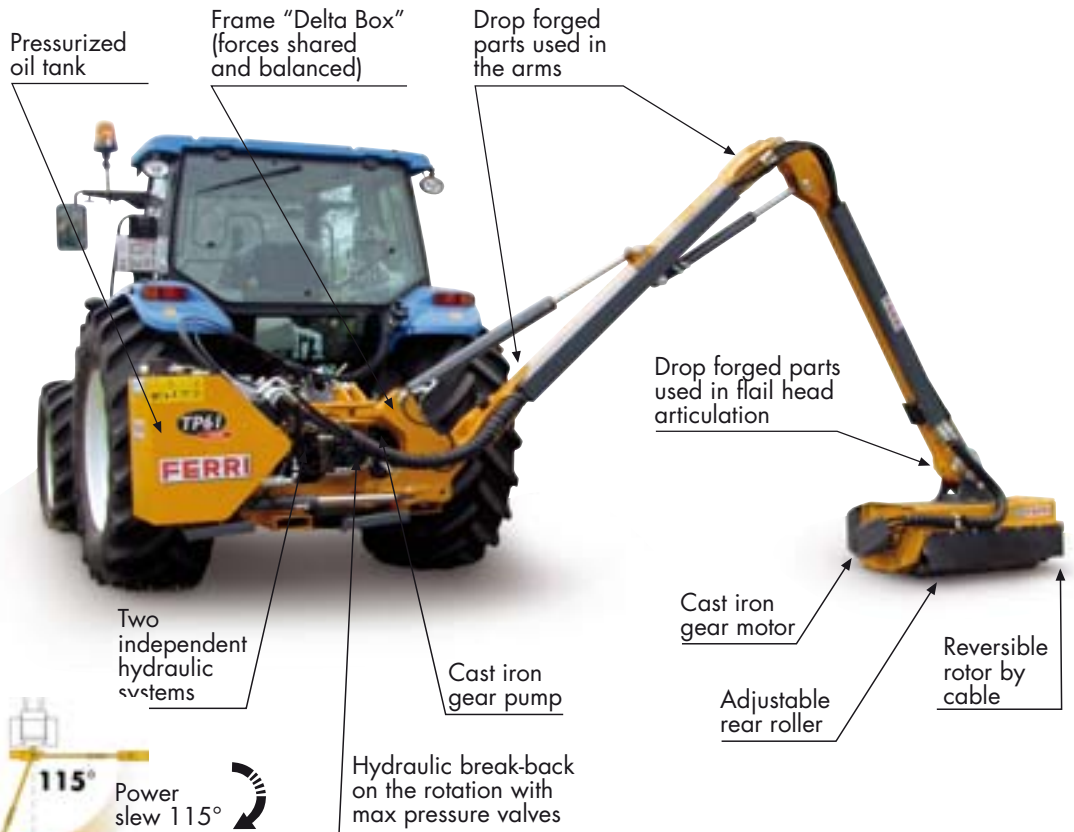




TP FARM

HYDRAULIC REACH MOWERS (GEAR HYDRAULIC SYSTEM)



Floating head system



"Overlap" spiral rotor with two spiral rows



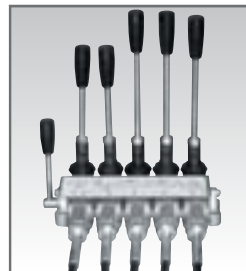
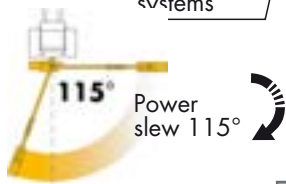
Frame "DELTA BOX" (forces shared and balanced)



Drop forged parts



Oil cooler with thermostat (option)

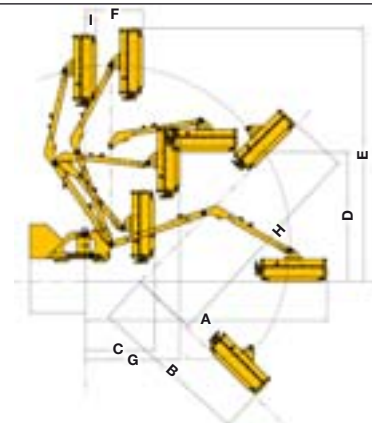


Cable controls

HP Tractor		60	70	80	90	Min. tractor weight Kg	Min. tractor width m
TP51 Farm						3000	2,00
TP61 Farm						3200	2,20

Working positions (m)

		TP51 Farm		TP61 Farm	
		TI100	TI120	TI100	TI120
A	m	4,72	4,82	5,82	5,92
B	m	3,13	3,23	4,23	4,33
C	m	1,38	1,38	1,42	1,42
D	m	2,57	2,57	3,31	3,31
E	m	4,95	5,05	6,05	6,15
F	m	1,15	1,15	1,15	1,15
G	m	1,89	1,89	2,16	2,16
H	m	4,31	4,41	5,41	5,51
I	m	0,22	0,22	0,14	0,14



Technical data

Model	Max horizontal reach*	Weight	Oil	Rotor	P.t.o.	Flail head angle
	m	Kg	l	rpm	MAX rpm	on top mounting
TP51 Farm	T1100	820	137	3.100	540	190°
	T1120	855				
TP61 Farm	T1100	880	137	3.100	540	190°
	T1120	915				

* Reach measured from tractor centre line to head edge.

Machines with cable controls "Classic"

TP51 Farm Classic with T1100 flail head m 1,00

TP51 Farm Classic with T1120 flail head m 1,20

TP61 Farm Classic with T1100 flail head m 1,00

TP61 Farm Classic with T1120 flail head m 1,20

Completing equipment to the base machine

WARNING: due to the high offset loads on the linkages it is **necessary** to fit two stabilizers

Stabilizers to the tractor (cod. TGA5020)

"Delta yoke" for stabilizers (code OPT001121000)

Stabilizers for "Delta yoke" (code TSN5033)

Fixed linkage to be adapted to the tractor top link area (code ATT/4)

Stabilizers for fixed linkage (code TGA5020)

Option

Oil cooler with thermostat (code TSP5002)

Lift float (code TP5104)

Bumpers with illumination system (code TSP5022)

Flail head

	T1100	T1120
Width of cut (m)	1,00	1,20
Rotor speed (rpm)	3100	3100
Blade tip speed (m/sec)	60	60
Flail head angle	190°	190°
Weight (kg)	175	210



TI Series Direct Drive

- Flail Head
- Totally independent hydraulic system (worm cast iron pump and motor)
- FLOATING head system
- Drop forged parts used in the arms and flail head articulation
- Hydraulic break-back on the rotation with max pressure valves
- Mechanic roll-over protection system (SAB)
- Reversible rotor cable (DSR)
- Front and rear abrasion resistant guard for flail head
- Oil and Pto shaft

Flails T1100 - T1120

Interchangeable on the same rotor

Multi-use blades for: grass, shrubs, bushes, sticks, wood Ø max 3 cm	Spoon blade for: grass, shrubs, bushes, sticks, wood Ø max 2 cm	"T" Hammer for: wood Ø max 4 cm	Articulated Y blades for: grass, stick Ø max 2 cm
Code 0901146	Code 0901164	Code 0901147	Code 0901049
T1100 n° 36 T1120 n° 44	T1100 n° 18 T1120 n° 22	T1100 n° 18 T1120 n° 22	T1100 n° 48 T1120 n° 60
T1100 Standard T1120 Standard			